



# SUIT CUSTOMIZATION TUTOR **TECNICA-EVO**

IA859E

NEW STANDARD FIA 8856-2018



## GREY AREA SHINE FABRIC

## WHITE AREA

FOR SHOULDER STRIPES A DIFFERENT AND MONOCHROMATIC COLOR MUST BE USED

WHITE X/148/020	SILVER X/148/081	CYAN BLUE X/148/244	ROYAL BLUE X/148/041	NAVY BLUE X/148/042	RED X/148/061	FLUO YELLOW X/148/099	DARK GREY X/148/082	BLACK X/148/071
--------------------	---------------------	------------------------	-------------------------	------------------------	------------------	--------------------------	------------------------	--------------------

## CYAN AREA

STRETCH DRY SYSTEM FABRIC - NOT PRINTABLE/EMBROIDERABLE

ROYAL BLUE X/608/041	NAVY BLUE X/608/042	RED X/608/061	DARK GREY X/608/082	BLACK X/608/071	SILVER X/608/080	FLUO YELLOW X/608/099	WHITE X/608/020
-------------------------	------------------------	------------------	------------------------	--------------------	---------------------	--------------------------	--------------------

## PINK AREA

INTERLOCK FABRIC - NOT PRINTABLE/EMBROIDERABLE

WHITE X/102/020	SILVER X/102/081	ROYAL BLUE X/102/041	NAVY BLUE X/102/042	YELLOW X/102/051	RED X/102/061	ECRÙ X/102/028	DARK GREY X/102/082	BLACK X/102/071	FLUO YELLOW X/102/099
--------------------	---------------------	-------------------------	------------------------	---------------------	------------------	-------------------	------------------------	--------------------	--------------------------

## YELLOW AREA

WRIST AND ANKLE CUFF'S FABRIC

WHITE X/105/N/020	SILVER X/105/N/081	ROYAL BLUE X/105/N/041	NAVY BLUE X/105/N/042	RED X/105/N/061	ECRÙ X/105/N/022	DARK GREY X/105/N/082	BLACK X/105/N/071
----------------------	-----------------------	---------------------------	--------------------------	--------------------	---------------------	--------------------------	----------------------

## GREEN AREA

DRY SYSTEM FABRIC - NOT PRINTABLE/EMBROIDERABLE

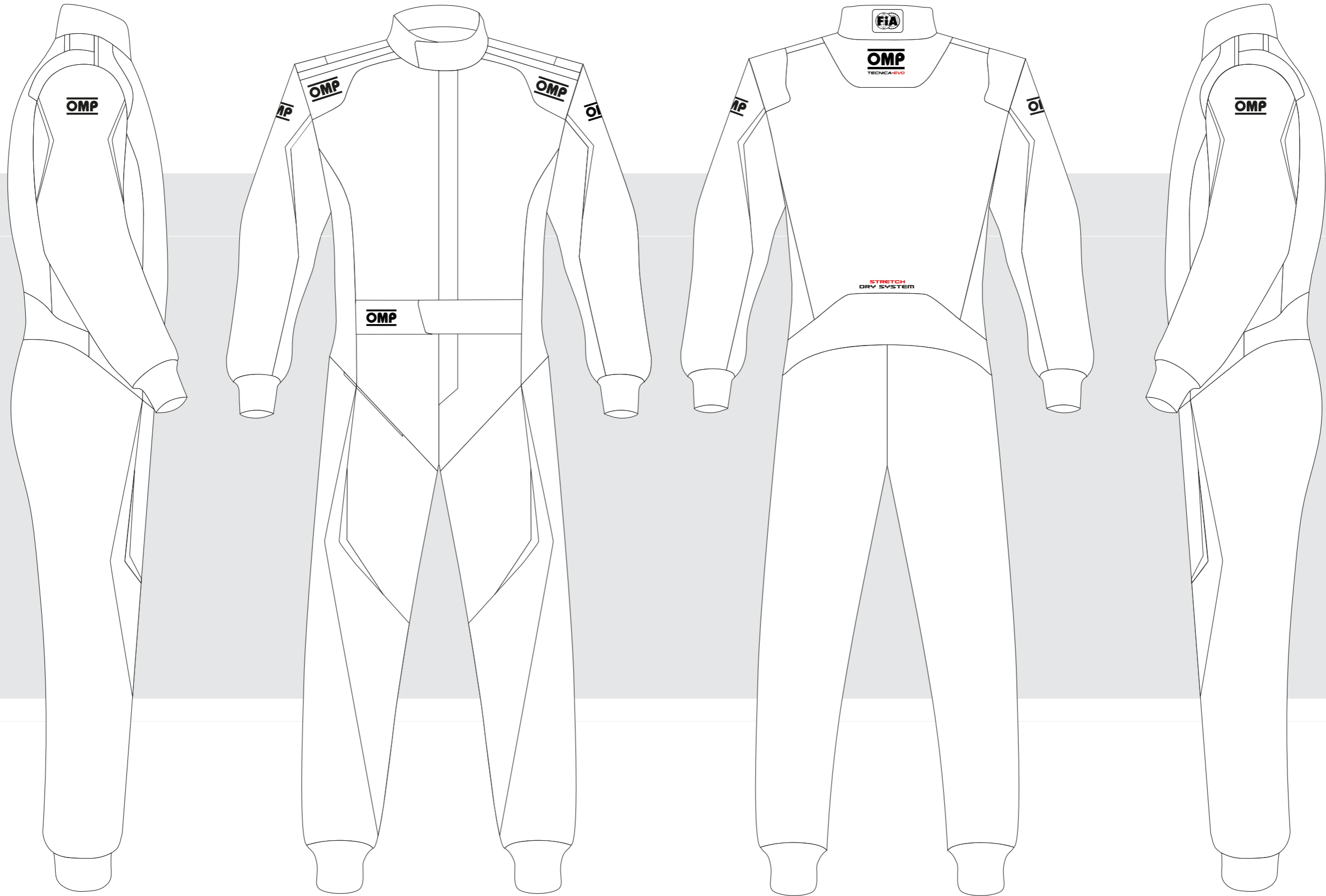
WHITE X/604/020	ROYAL BLUE X/604/041	RED X/604/061	DARK GREY X/604/082	FLUO YELLOW X/604/099	BLACK X/604/071
--------------------	-------------------------	------------------	------------------------	--------------------------	--------------------



CUSTOMER: \_\_\_\_\_

TEAM: \_\_\_\_\_

DRIVER NAME: \_\_\_\_\_



CUSTOMIZED SUIT CONFIGURATOR

IA01859E **TECNICA-EVO**

© OMP RACING SPA - ALL RIGHTS RESERVED

THIS DESIGN IS THE INTELLECTUAL PROPERTY OF OMP RACING SPA - ANY REPRODUCTION WITHOUT PERMISSION WILL BE PROSECUTED TO THE FULLEST EXTENT OF THE LAW. By approving this sketch, the customer acknowledges that, during the process of manufacturing, variations may occur in colors and other minor aspects, because of the use of different technologies for the acquisition and reproduction of images, and for the making of the suit itself. OMP is not responsible for such variations and deviations. For further information: [www.ompracing.com](http://www.ompracing.com)

DATE: \_\_\_\_\_ REV. \_\_\_\_\_